



Zero Bound

Installation Manual



Ezylite P/L
Fac 2/89 Somerset Road
Campbellfield, Melbourne, 3061.
P. 03 9359 2336
F. 03 9359 9306

E. info@ezylite.com.au www.ezylite.com.au

Index

P- 01

Page 02 Index

Page 02 Introduction

Page 03 Wall Setup

Page 04 Installation Details (Stump)

Page 05 Installation Details (Slab)

Page 06 Zero Allotment System

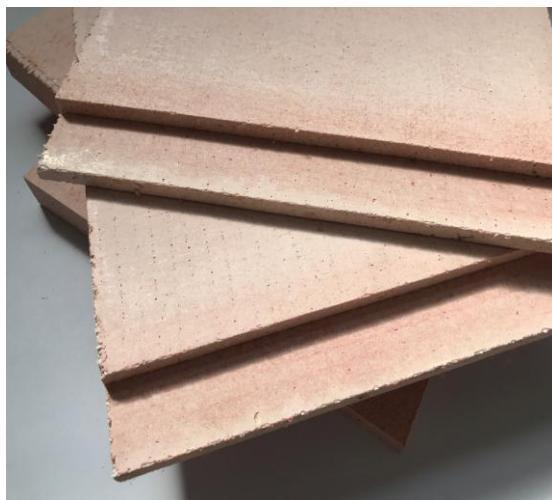
Page 07 Zero Allotment Installation

Page 08 Installation Around Windows

Page 09 Expansion Joints

Page 10 Rendering or Painting System

Page 11 Warrantee & Conditions



Introduction:

Ezylite ZeroLine

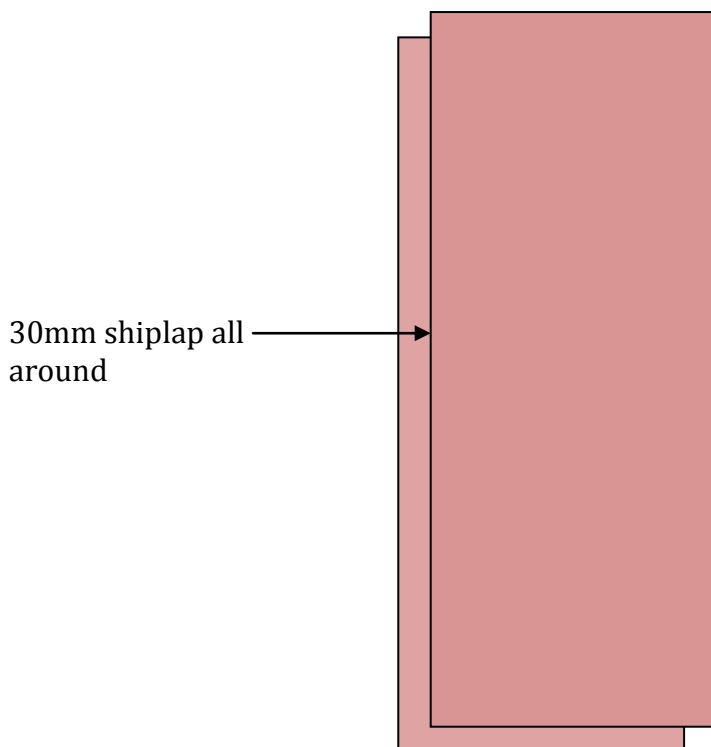
Ezylite ZeroBound Panel is a Non-combustible fibre board reinforced with 4 layers of high strength fibreglass mesh to provide superior strength. **ZeroBound** is **100% free from ASBESTOS Celica, formaldehyde and any harmful materials.**

Use:

Ezylite ZeroBound is ideally for boundary walls , wall cladding, decking subfloor and any fire rated wall cladding. **ZeroBound** tested in accordance with **AS/1530, 1, AS/1530, 2, AS/ 1530, 3 and AS/ 1530, 4.** The FRL (Fire Resistance Level) **60/60/60**, available in sizes of 600 x 2700 and @ 14mm thick.

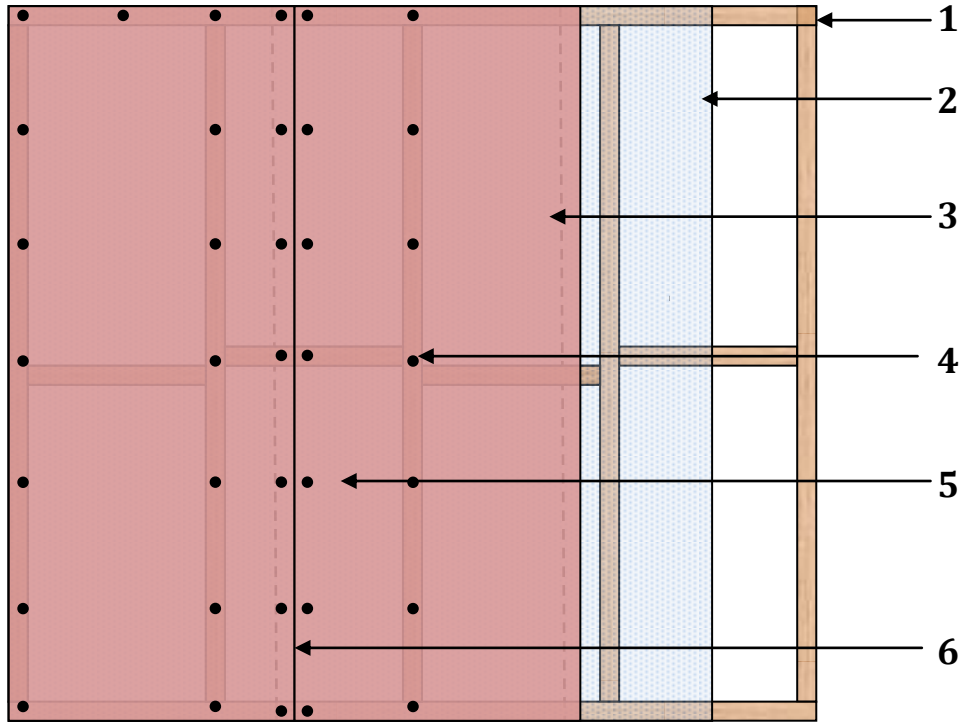
ZeroBound panels have a 30mm shiplap all around making installation simple and no need for back blocking. **ZeroBound** panels can be painted or rendered refer to coating applications.

The advantages of **ZeroBound** easy to cut, lightweight, fire rated 1 hour (**FRL 60/60/60**) thermal rated, high impact resistant, termite resistant, can be painted or rendered, can be installed vertically, horizontally or diagonally. This is by far the only panel with so many advantages and NO disadvantages,



Ezylite ZeroBound

Wall Setup



Wall detail 1

Fixing Table:

1	Timber or steel frame spaced @ 450 centres
2	Breathable Sarking
3	14 mm Ezylite ZeroBound panel fixed direct to frame or Battens spaced 450 centres
4	8g x 40mm galvanized fixing screws spaced 300 centres
5	8g x 25 mm galvanized fixing to shiplap @ 300 centres
6	Fuller fire rated sealants between joints (Max 5mm gaps)

Notes:

Place fire rated sealants between all joints and around windows, ensure no gaps and only use Fuller Fire Sound or Bostik fire rated sealants tested on all types of Ezylite panels.

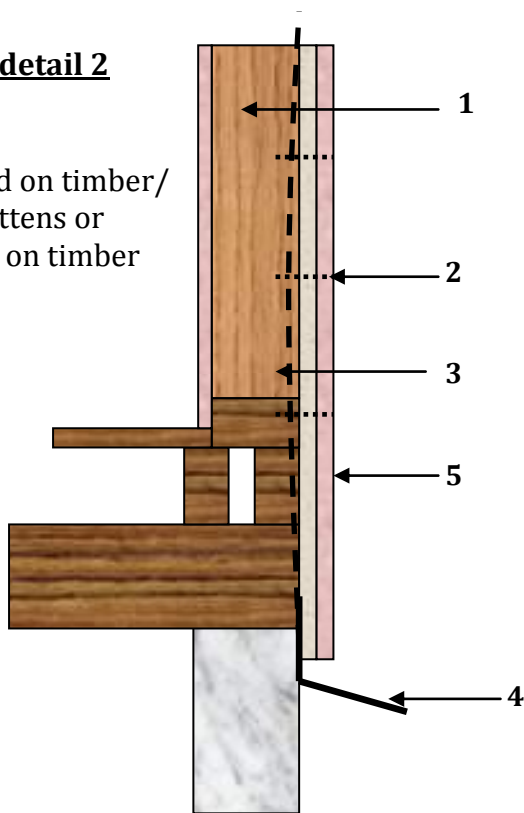
All external fixing screws must be C3 Galvanized min penetration into timber 30mm and 15mm into steel.

Ezylite **ZeroBound** panel can be installed directly to timber or steel frames or over steel or timber battens spaced 450 centers.

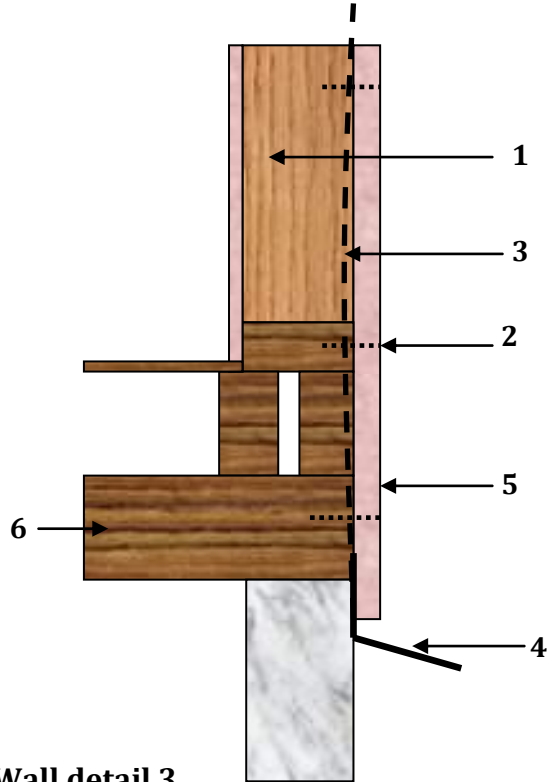
Wall and Sub- Floor details

Wall detail 2

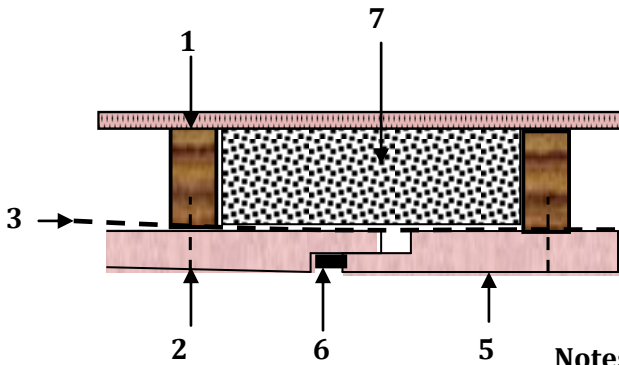
Installed on timber/
steel battens or
directly on timber
frames



Wall detail 3



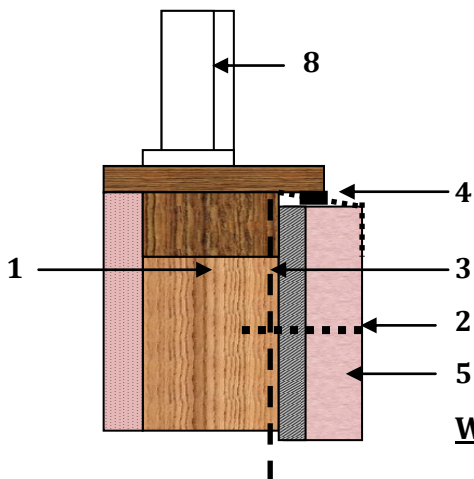
Wall detail 4



1	Timber/Steel frame spaced 450 centres
2	Galvanized screws
3	Breathable Sarking
4	Metal Flashing
5	EzyLite ZeroBound panel
6	Fire rated sealants Fuller Firesound or Bostik Fireban one (Max 5 mm Gap)
7	R-2.5 Fibreglass insulation
8	Aluminium window

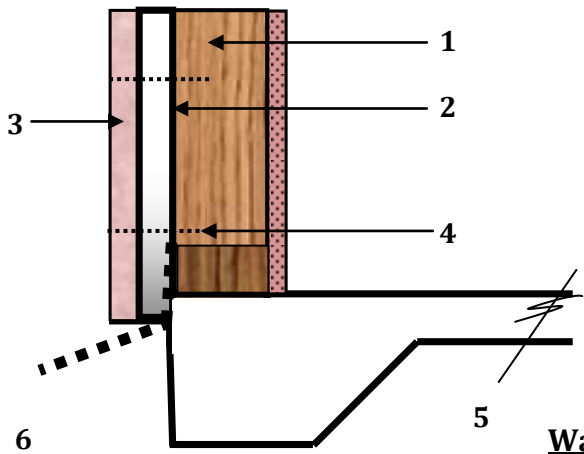
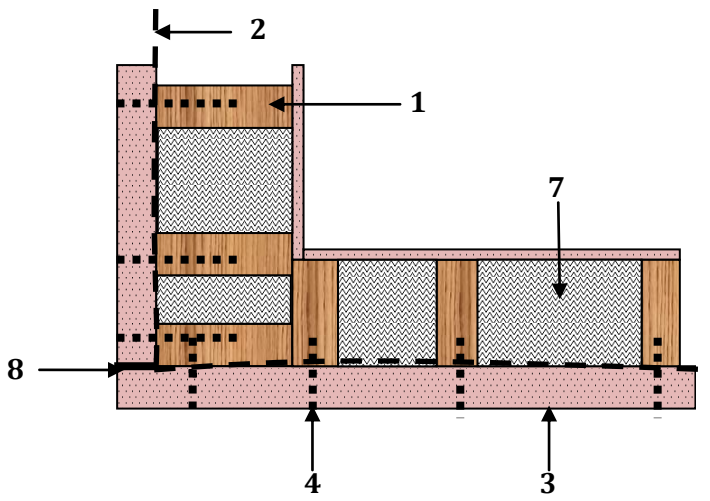
Notes:

Place fire rated sealants between all joints and around windows, ensure gaps DO NOT exceed 2-3mm. Only use Fuller Fire Sound or Bostik Fireban one rated sealants tested on **EzyLite** panels. All external fixing screws must be C3 Galvanized min penetration into timber 30mm and 15mm into steel. EzyLite **ZeroBound** can be installed directly to timber or steel frames or over steel or timber battens spaced 450 centers.



Window Detail 5

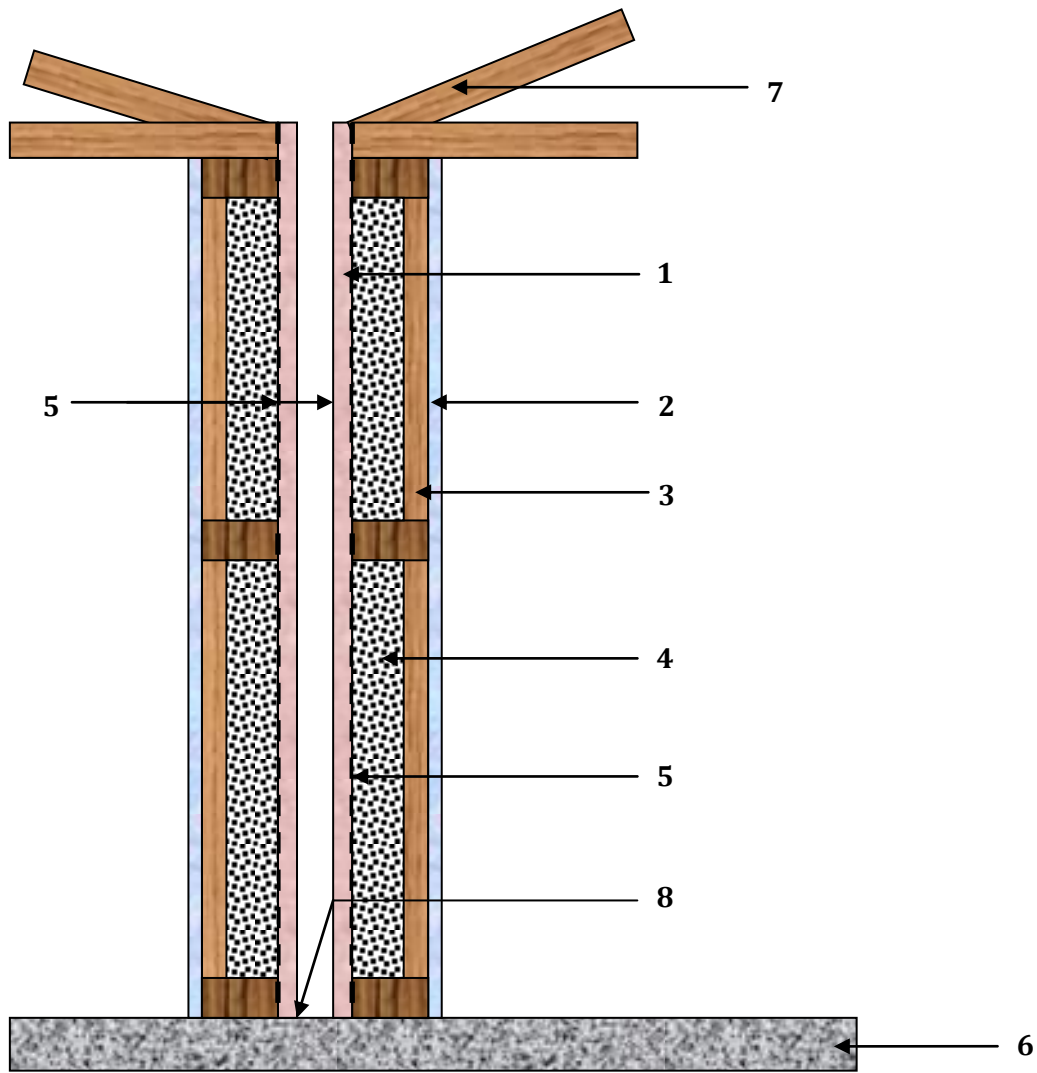
Wall Detail 6



Wall to Slab Detail 7

1	Timber or steel frame spaced @ 450 centres
2	Breathable Sarking
3	14 mm Ezylite ZeroBound panel fixed direct to frame or Battens spaced 450 centres
4	8g x 40mm galvanized fixing screws spaced 300 centres
5	Concrete Slab
6	Metal Flashing fixed as shown
7	R-2.5 Fiberglass insulation
8	Fire rated sealants Fuller Firesound or Bostik Fireban one

Zero Allotment Setup



Zero Allotment Detail 8

1	EzyLite ZeroBound Panels
2	10 mm Plaster board
3	Timber or Steel Frame spaced @ 450 Centres
4	R-2.5 Fibreglass insulation
5	Breathable Sarking
6	Slab
7	Roof
8	Fire Rated Sealants Fuller Firesound or Bostik Fireban one

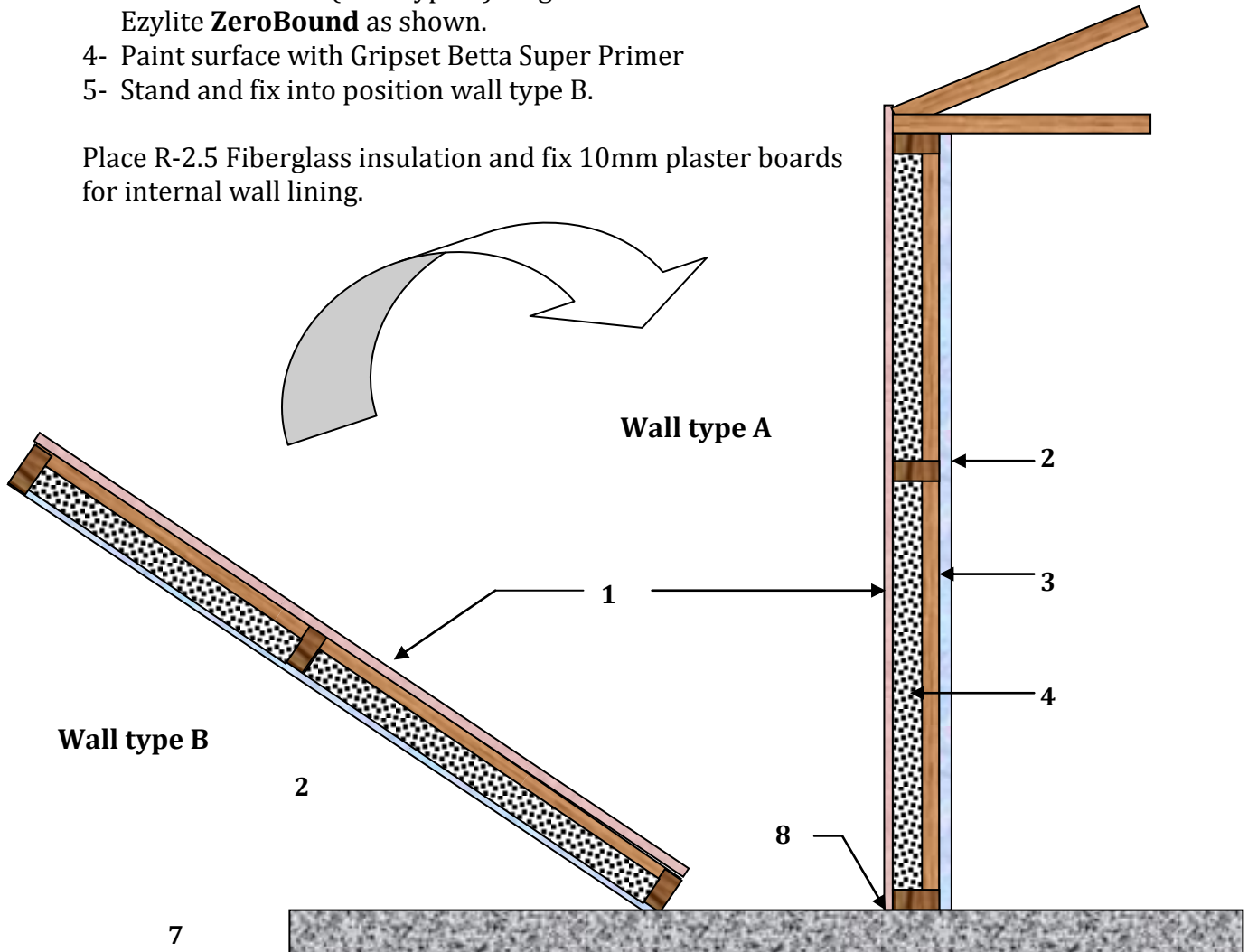
Zero Allotment Installation

Ezylite have developed a new system for Zero Allotment simplifying installation to any handyman, carpenter or DIY tradesman can install ZeroBound Panels. **ZeroBound** Panels are available in 600 x 2700 @ 14mm thick.

The installation system is as simple as shown below,

- 1- Fix ZeroBound to external face of wall type A as shown below
- 2- Prime Wall Type A with Gripset Betta Super Primer
- 3- Build wall frame (Wall type B) on ground and clad external face with Ezylite **ZeroBound** as shown.
- 4- Paint surface with Gripset Betta Super Primer
- 5- Stand and fix into position wall type B.

Place R-2.5 Fiberglass insulation and fix 10mm plaster boards for internal wall lining.

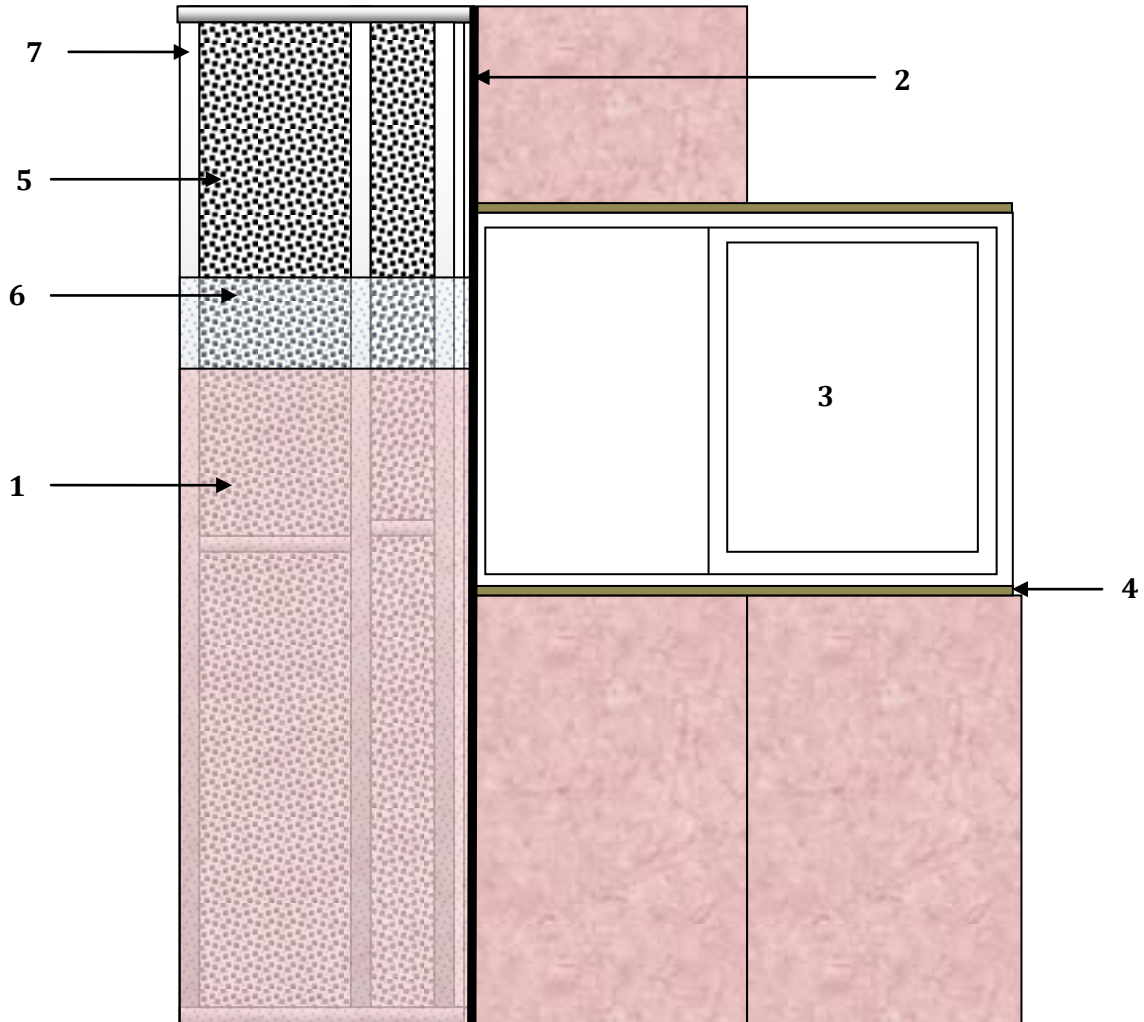


Wall to Slab Detail 9

1	EzyLite ZeroBound Panels
2	10 mm Plaster board
3	Timber or Steel Frame spaced @ 450 Centres
4	R-2.5 Fibreglass insulation
5	Breathable Sarking
6	Slab
7	Roof
8	Fire Rated Sealants Fuller Firesound or Bostik Fireban one

Window Detail:

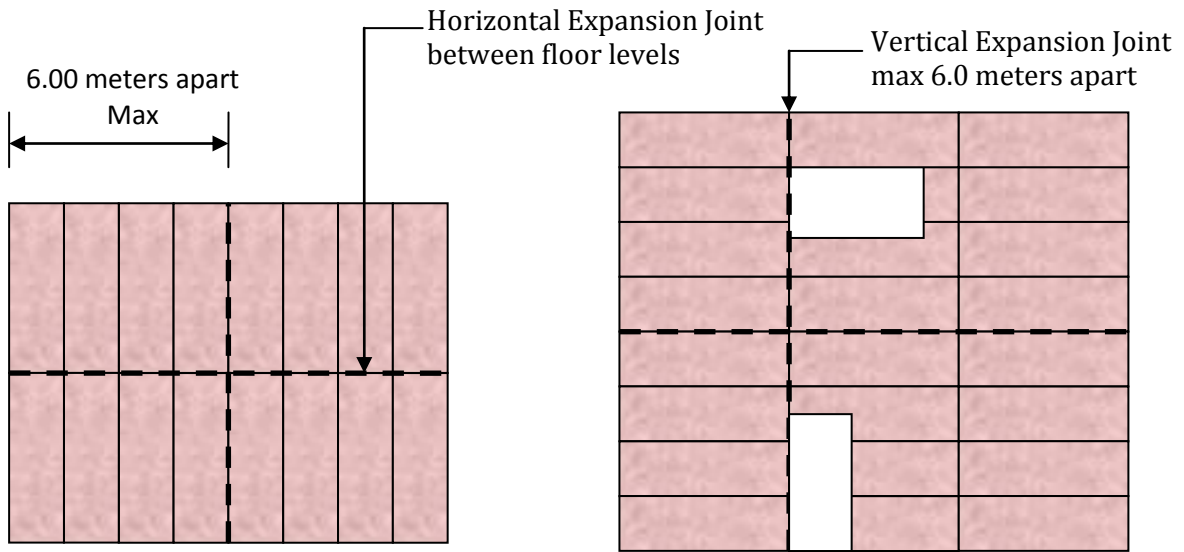
Installers must place fire rated sealants 5mm max around windows to allow movement and avoid fire penetrating through gaps. Only use **Fuller Firesound** or **Bostik Fireban one** which was tested on our panels. (See Detail



Window Detail 10

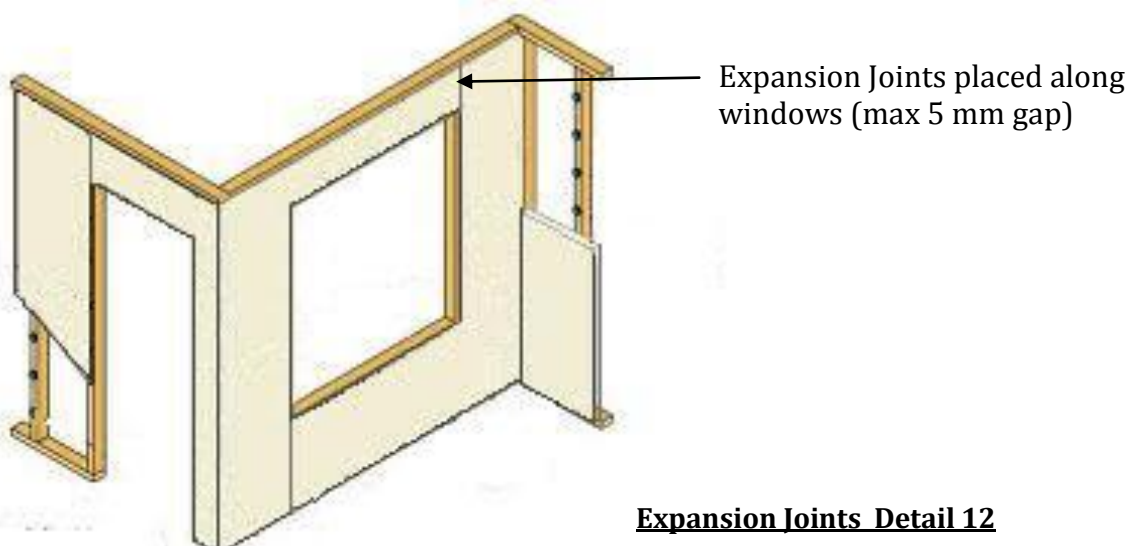
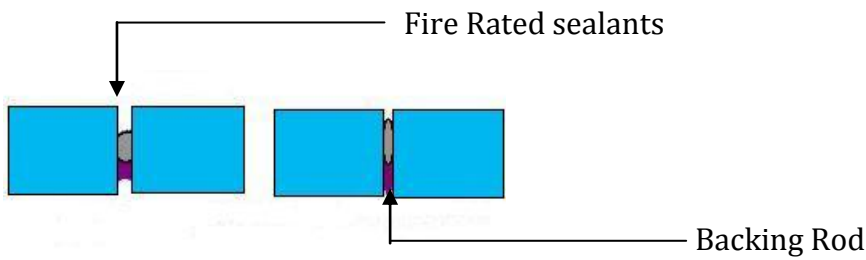
1	EzyLite ZeroBound Panels
2	Expansion Joint (Max 5 mm Gap) filled with approved fire rated sealants
3	Window
4	Fire Rated Sealants
5	Fibreglass insulation R-2.2
6	Breathable Sarking
7	Timber/Steel frame @ 450 centres Max

Expansion Joints Detail 8



Expansion Joints Detail 11

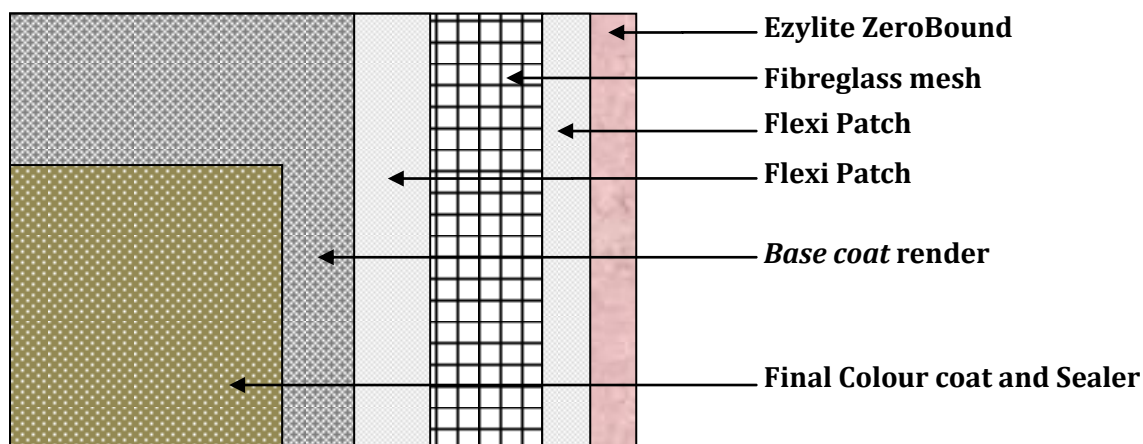
Expansion joints must be placed maximum 6.0 meters apart and max 5 mm gap to relive stress on building materials caused by building, thermal expansion and temperature changes.



Expansion Joints Detail 12

Rendering System

Warning: Ezylite Pty Ltd will Not cover warrantee if rendering and installation is not followed to precise system in current Installation manual



Rendering:

Rendering System Detail 13

1. Trowel on Patch approx 1 mm thick over joints then place 100mm wide alkaline-resistant 5mm weave fibre-glass mesh (160g/m²) over wet rendering. Apply aluminium angle beads to all external corners including window and door openings. Apply a 2nd layer of patch over fibreglass mesh while patch is still wet. (Allow drying time Min 24 hrs) refer to manufacturers specifications for drying periods.
2. Render entire board surface with polymer modified acrylic render Quickcote flexi patch/ Quickcote wet patch, or similar, at a minimum of 2mm thick.
3. The mesh is to be trowelled into the surface of the wet render, positioned just below the surface. Under no circumstances should the mesh be fixed to the walls and render applied over it. Overlap all fibreglass mesh sheets a minimum of 50mm.
4. Ensure the entire surface is level (taking into account the joint). Make sure that the joint is not proud of the remaining surface. Apply a second coat if the outline of the joint and fixings is not eliminated.
5. Apply trowel-on texture/colour to entire surface, Please note: all coatings must be applied and maintained in accordance with the coating manufacturer's instructions.
6. Apply by roller (or mix in with colour when trowelling) sealer to entire wall. The sealer protects the colour fading and waterproofing of wall.

Painting System

Warranty will not be covered if Gripset Betta Super Primer is Not used.

The Ezylite **ZeroBound** panels painting system consist as follows,

- 1- Ensure panels are free from dust, loose particles or grease
- 2- Applying 2 coats of **Gripset Betta Super Primer** (follow manufacturers specifications)
- 3- Apply min 2 coats of reputable external paint (colour)



Special Note: Ezylite P/L will not provide certifications or warrantee on any wall cladding that are not installed, rendered or painted in accordance with current installation manual.

Warranty:

Ezylite Pty Ltd warrants for a period of (7) years ("the warranty period") from the date of purchase that all **Ezylite** products ("the product") will be free from defects due to faulty manufacture or materials, and will be resistant to cracking, rotting, fire and damage to the extent set out in **Ezylite** Pty Ltd published literature current at the time of installation, and strictly subject to the conditions set out below.

The Warranty is strictly subject to the following conditions:-

1. The product, and any other products including fasteners and joining systems, applied to or used in conjunction with the product must be used and installed strictly in accordance with the approved installation manual at the time of installation.

2. Under no circumstances will **Ezylite Pty Ltd** be liable for defects arising from:-

(a) A failure to use and/or install the product, or any products, strictly in accordance with the product installation manual.

(b) Render coating system not recommended or applied to **Ezylite** Panels, Render system must be applied as stated in coating system.

(c) Defective materials not supplied by **Ezylite Pty Ltd** ; or

(d) Impact.

3. **Ezylite Pty Ltd** will not be liable for breach of Warranty, and no breach of Warranty claim will be accepted, unless the Claimant makes a written claim and provides proof of purchase within 30 days of the alleged defect becoming apparent.

4. This Warranty is not transferable under any circumstances without the prior written consent of **Ezylite Pty Ltd**.

5. A Claimant's sole remedy for breach of Warranty is (at **Ezylite Pty Ltd** option) that **Ezylite Pty Ltd** will either replace or repair the defect, supply replacement product, or pay for the cost of replacement or rectification of the affected product.

6. Under no circumstances shall **Ezylite Pty Ltd** be liable for any consequential loss, property damage or personal injury, economic loss or loss of profits, arising in Contract or negligence or howsoever arising. Without limiting the foregoing, **Ezylite Pty Ltd** will not be liable for any claims, damages or defects arising from or in any way attributable to poor or defective workmanship, defective materials or poor design or detailing, settlement or structural movement and/or movement or materials to which the product is attached, incorrect design of the structure, acts of God including but not limited to earthquakes, cyclones, floods or other severe weather conditions or unusual climatic conditions, normal wear and tear, or growth of any organism on any product surface.

7. The express warranties set out above are in lieu of all other representations, warranties or conditions, express or implied including but not limited to implied warranties or conditions of merchantable quality and fitness for a particular purpose, and those arising by statute or otherwise in law or from a course of dealing or use of trade and which are excluded to the fullest extent permitted by law.

The joint and coating system must be applied by experienced applicators, as suggested by the joint and coating manufacturer. Any sand based rendering systems must use ionised sand bases. The selected joint and coating system must be applied to dry, clean sheet only. application must be completed within 30 days of the sheets being fixed on site.

It is the applicator's responsibility to use the appropriate compounds in the coating system sufficient to eliminate cracking of the joints under normal building settlement conditions.